

IEA SHC Task Meeting

Task 53

11th till 13th of April 2016, ATECYR, Madrid, Spain

Solar PV Cooling

*set in operation and system measurements
on going work*

Lukas Omlin, Paul Gantenbein

E-Mail: lukas.omlin@spf.ch, paul.gantenbein@spf.ch

Institute for Solar Technology SPF

University of Applied Sciences Rapperswil

Agenda

■ Content

- System
- Set in operation - first measurement results
(active cooling, free-cooling)
- System States and Control - measurement results
(domestic hot water preparation)
- Conclusion and Outlook

System

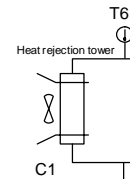
Hydraulic schematic

apparatus, tubes
(sensors & DAQ)

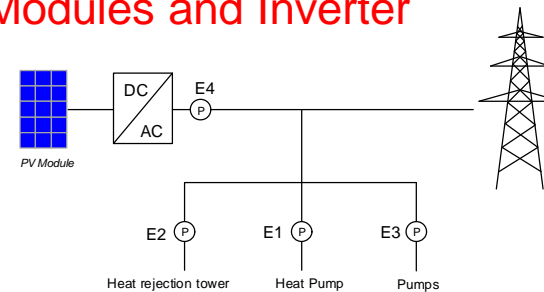


1. Measurement Equipment and Data Acquisition

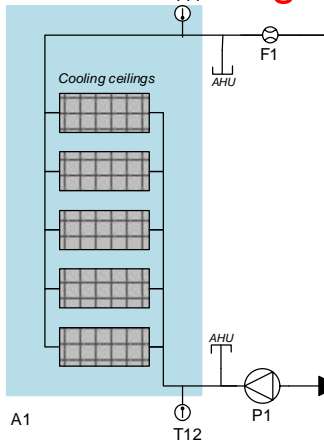
2. Heat Rejection Unit



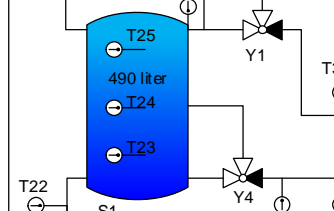
3. PV Modules and Inverter



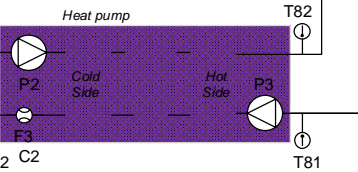
4. Cold Ceilings



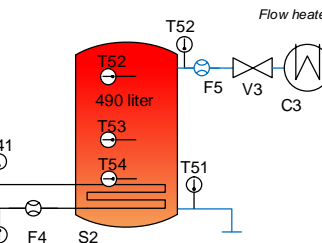
5. Cold Storage



6. Heat Pump - Cooling machine



7. Hot Storage



System

■ Main Components



PV modules (Meyer Burger) – south oriented



Cooling machine (HP; ait / Nibe) & storage tanks.

System

■ Main Components



Cold ceilings (Zehnder) installed in the Laboratory (52.5m²).



Outdoor unit

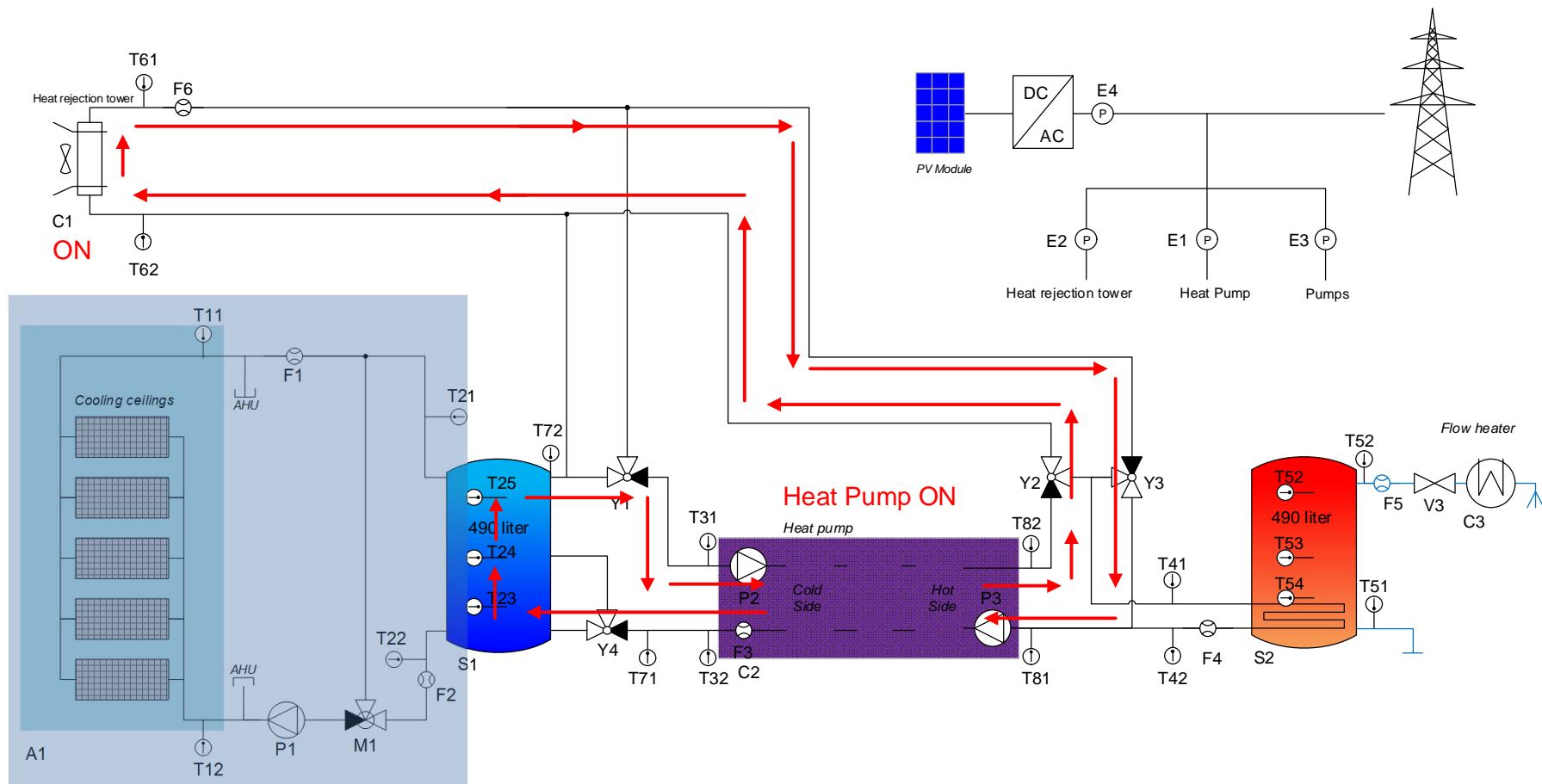
System

■ Main Components

Component	Manufacturer / Distributor	Type	Description
PV Modules	MEYER BURGER AG	Sky 285	9 modules (285 W _p nominal power) orientation: $\alpha = 8^\circ$ West, inclination: $\beta = 15^\circ$
Inverter	SMA	TL2500	2.5 kW nominal power
Heat Pump	Nibe	F 1155-6	brine / water heat pump (7 kW cooling power)
Cold Storage	alpha innotec	TPSK 500	445 l storage
Hot Storage	alpha innotec	SWWS 506	477 l immersed heat exchanger
Outdoor Unit	WT AG	-	brine - air heat exchanger (outdoor unit)
Cold Ceilings	Zehnder Group Schweiz AG	Zip2	25 elements (dimension: 3 m x 0.704 m)
Heat Transfer Fluid	Abderhalden Harapol AG	Minoltherm	Antifreeze heat transfer fluid based on water with 20 wt.% ethanol
Meteo Station	SMA	SMA Meteo Station	irradiance, outdoor ambient temperature, PV module temperature

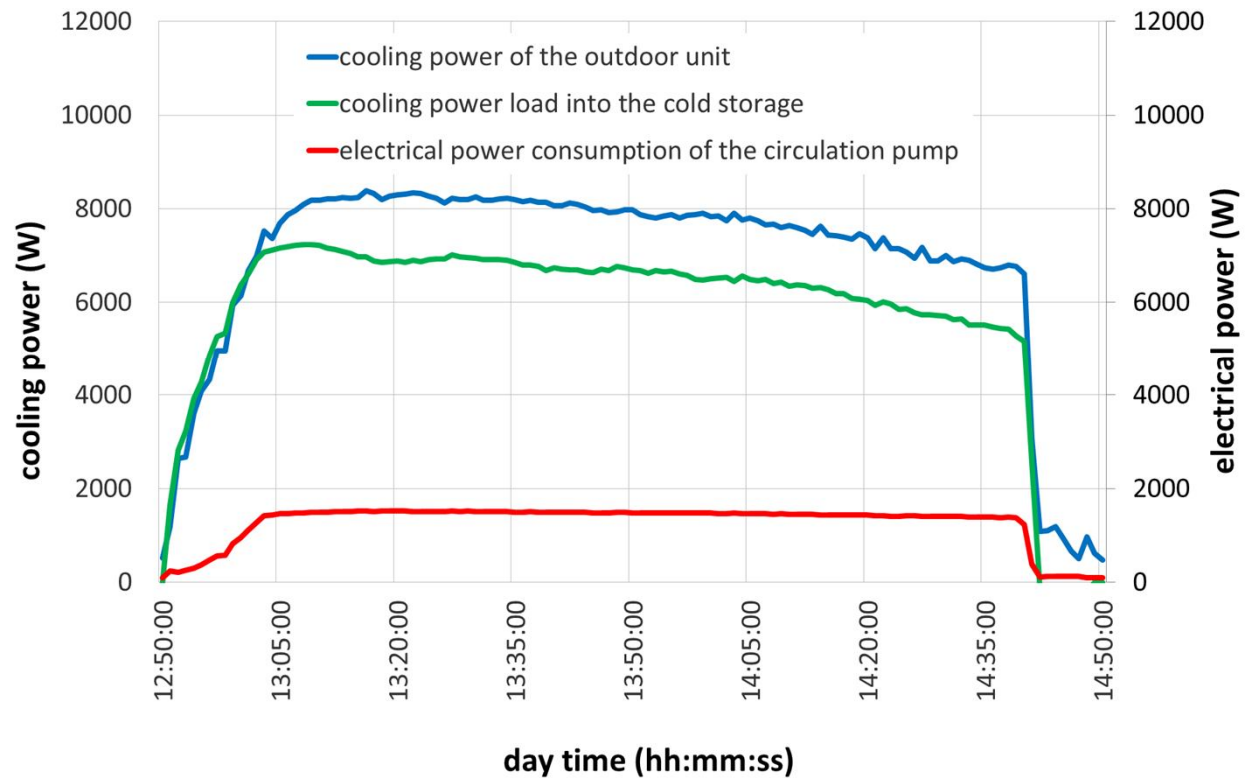
System states «active cooling»

■ Charging the cold storage and heat rejection to the ambient



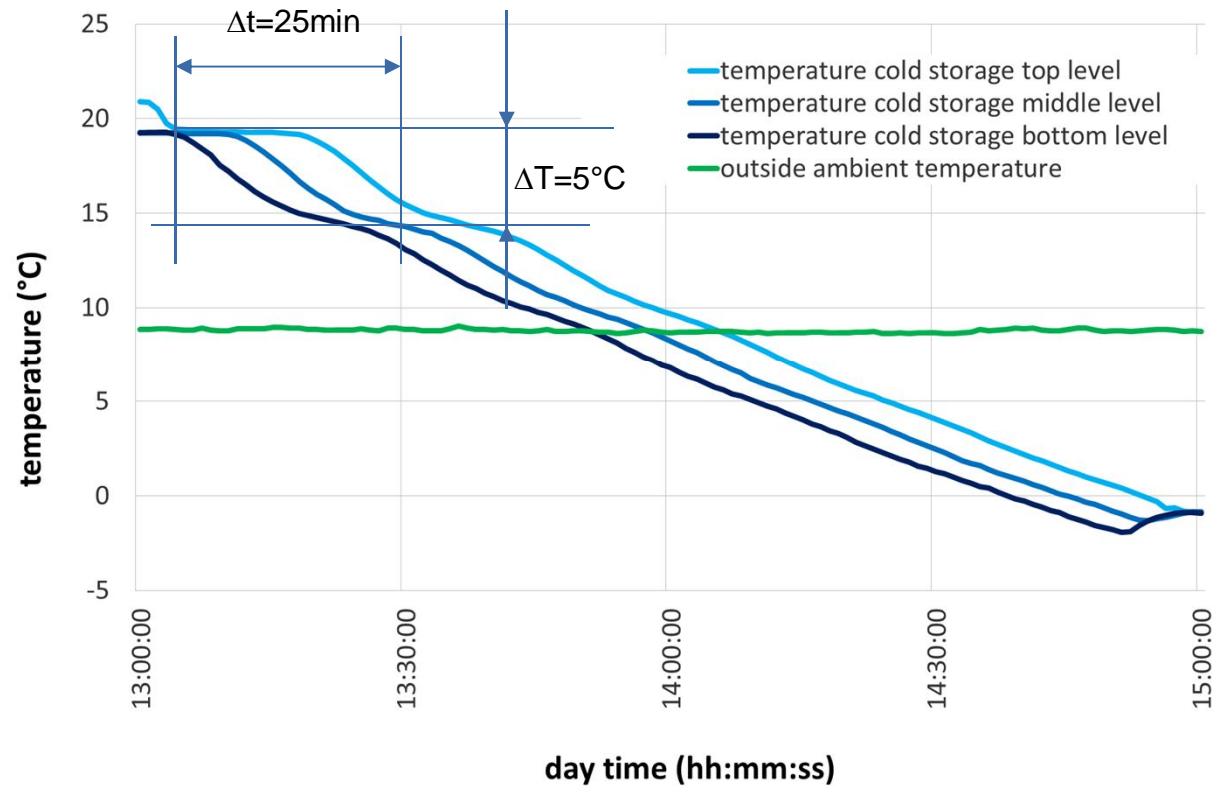
«active cooling» measurement results

■ Active cooling and heat rejection to the ambient



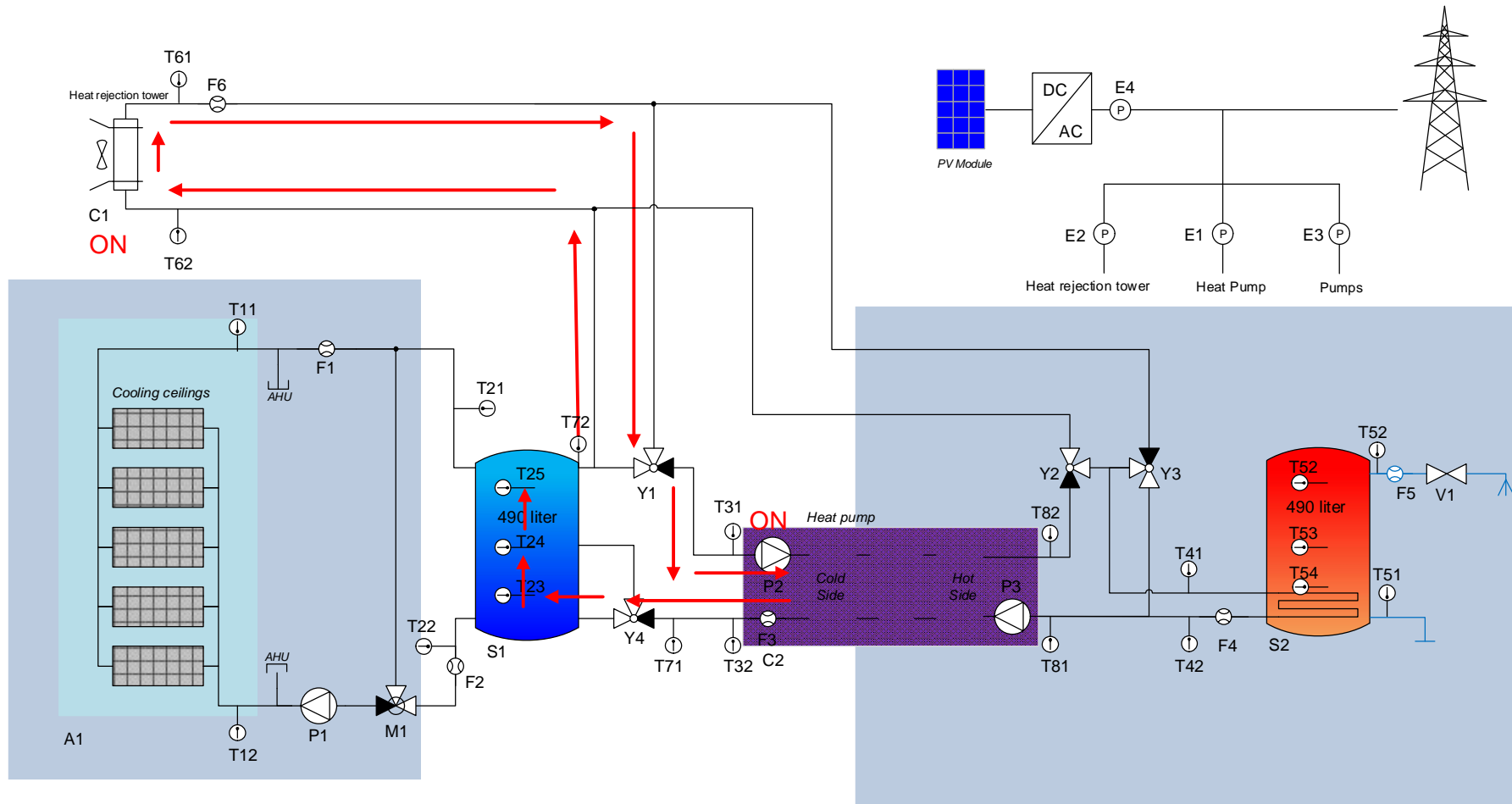
«active cooling» measurement results

■ Active cooling and heat rejection to the ambient



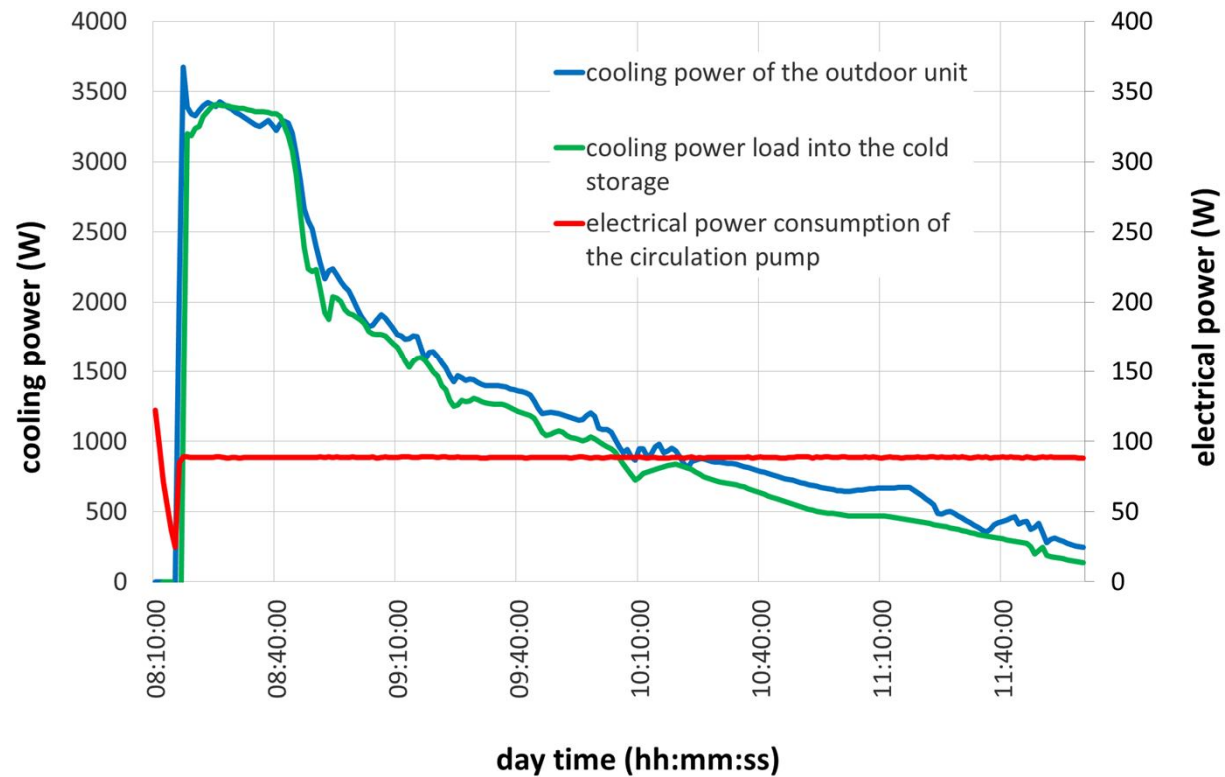
System state «free-cooling»

■ Charging the cold storage tank, outside ambient air as heat sink



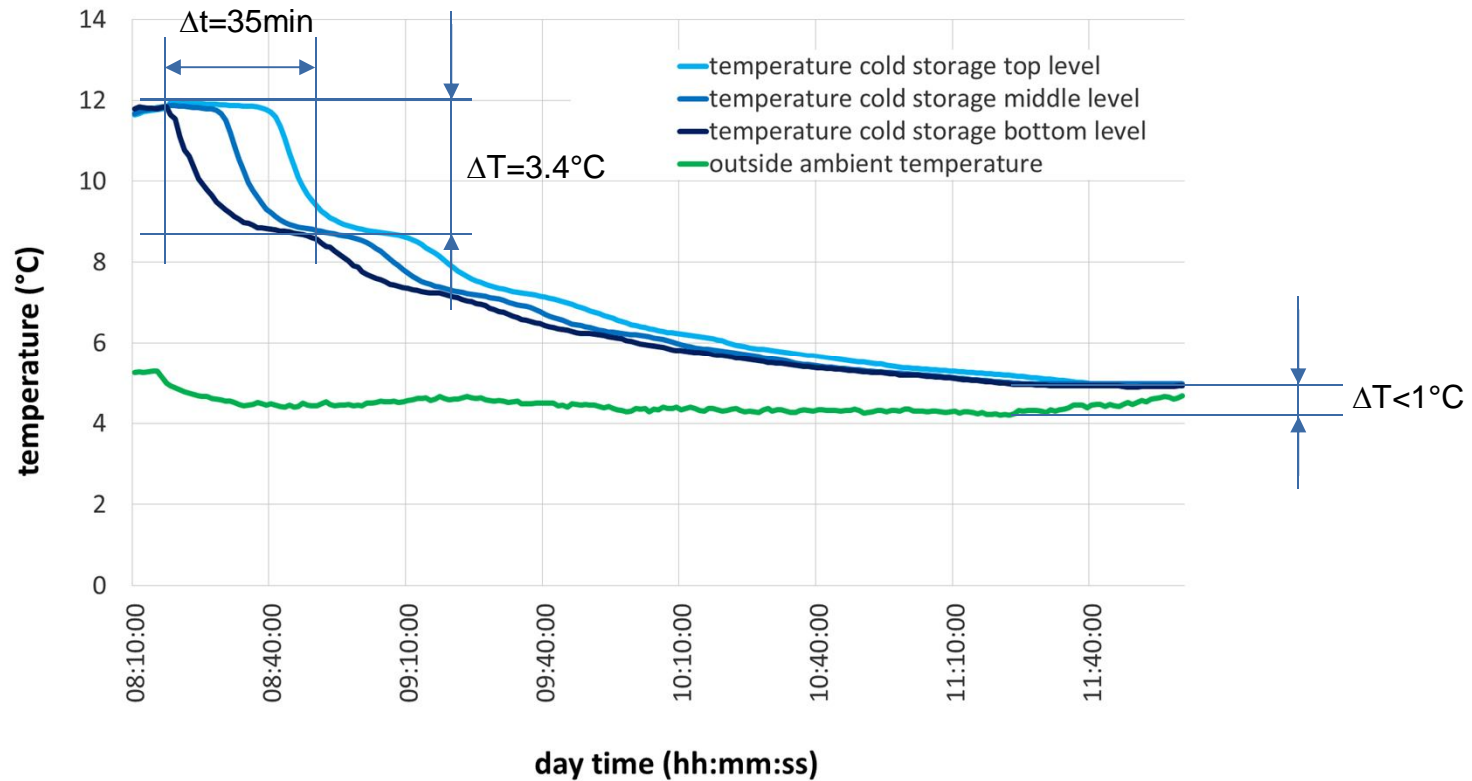
«free-cooling» measurement results

■ Cold preparation with free-cooling



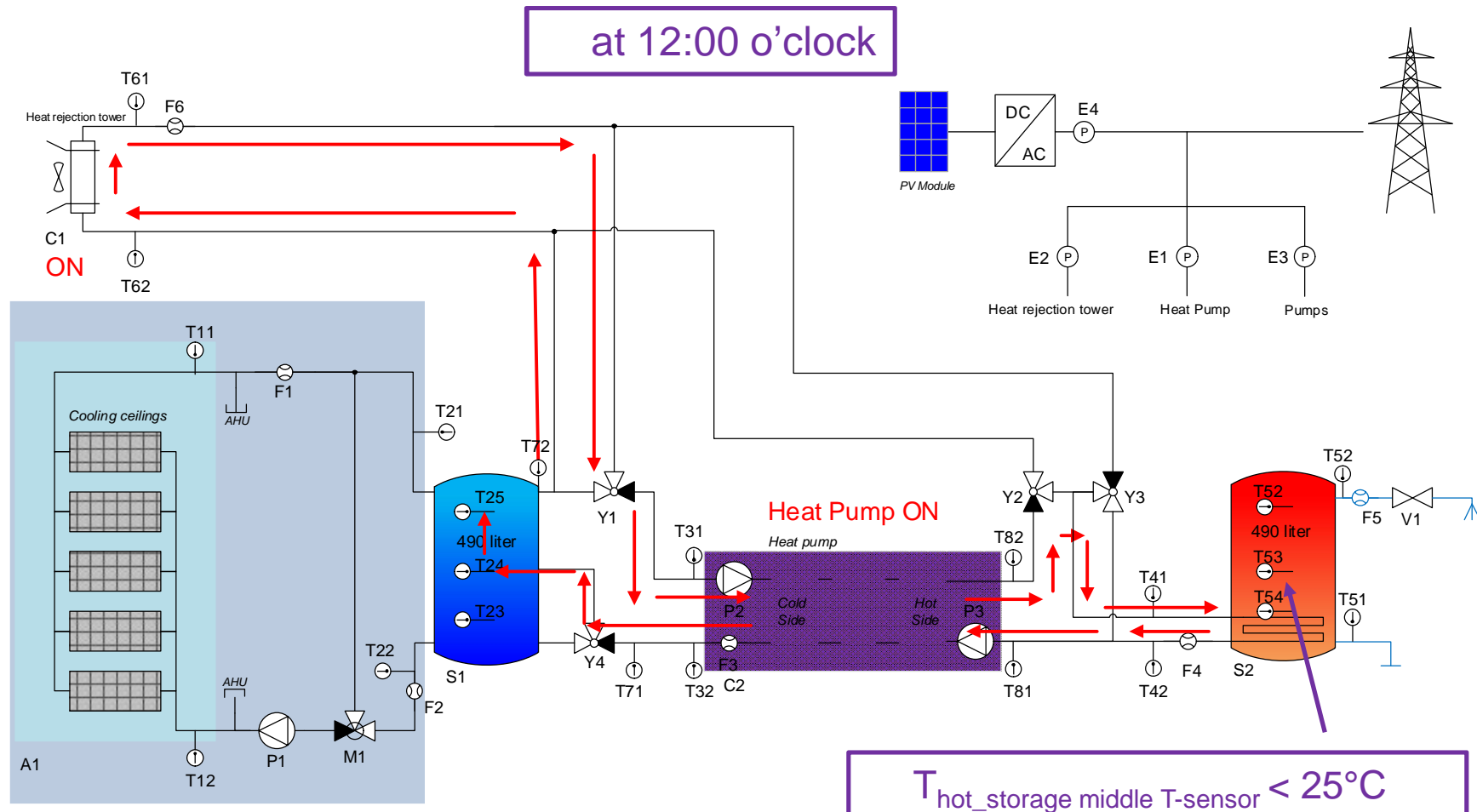
«free-cooling» measurement results

■ Cold preparation with free-cooling



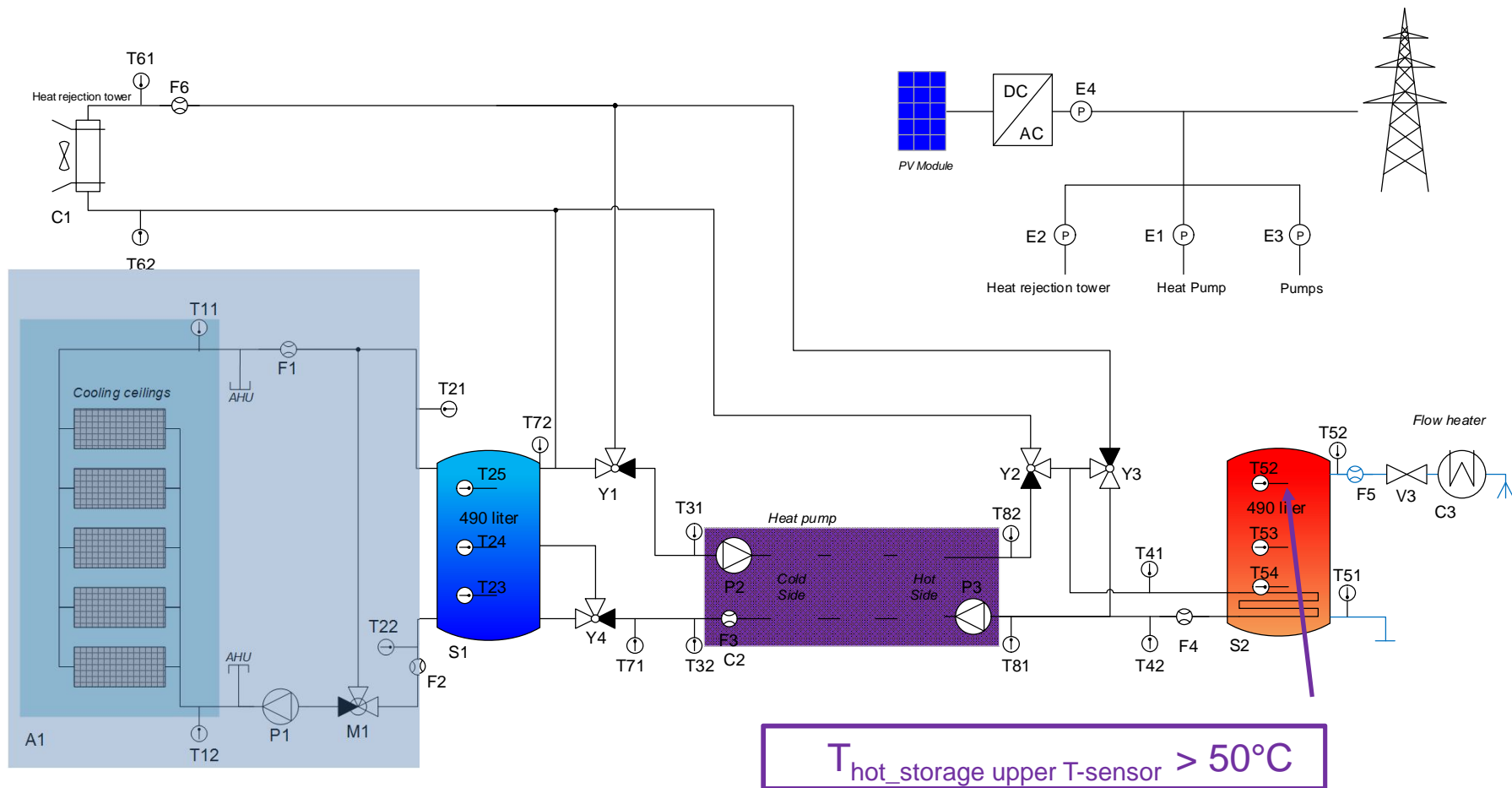
System states «domestic hot water preparation»

■ Charging the hot water storage tank, outside ambient air as heat source



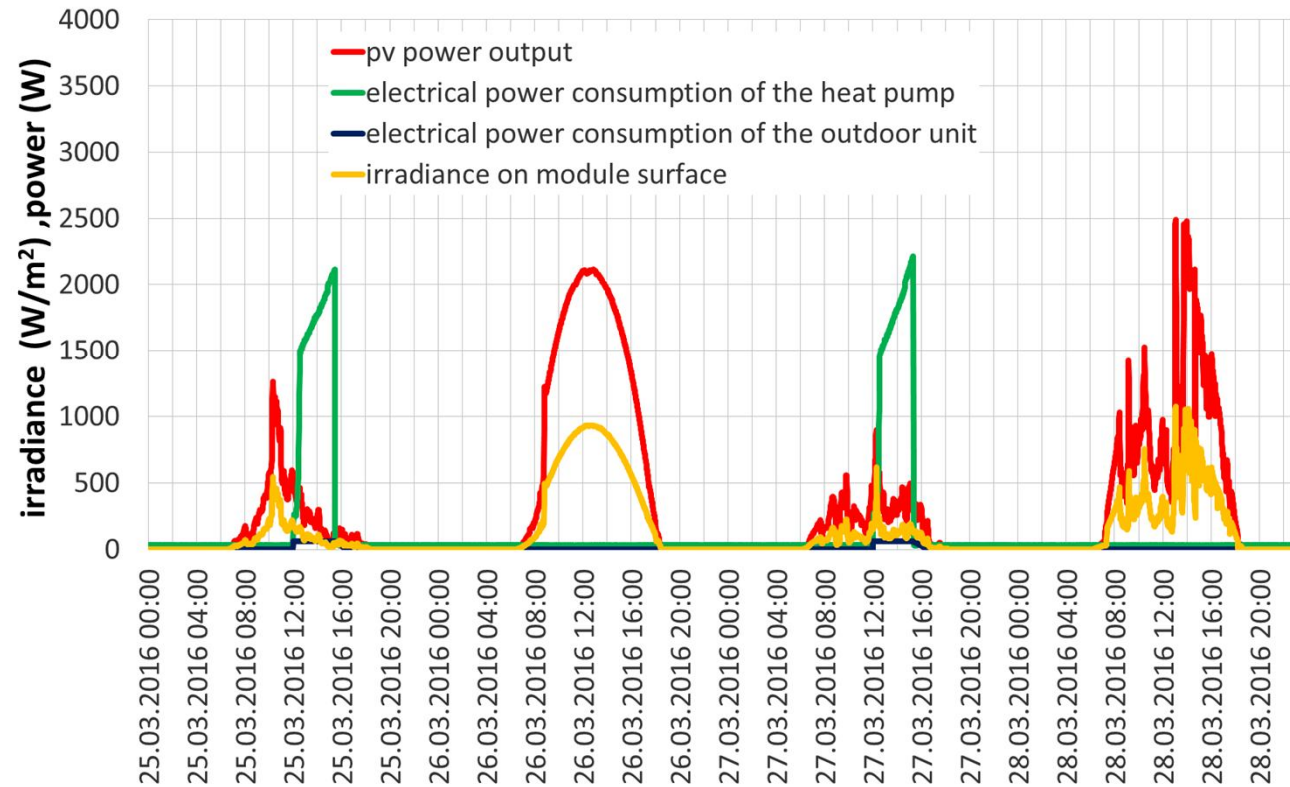
System states «domestic hot water preparation»

■ Stop Domestic Hot Water preparation.



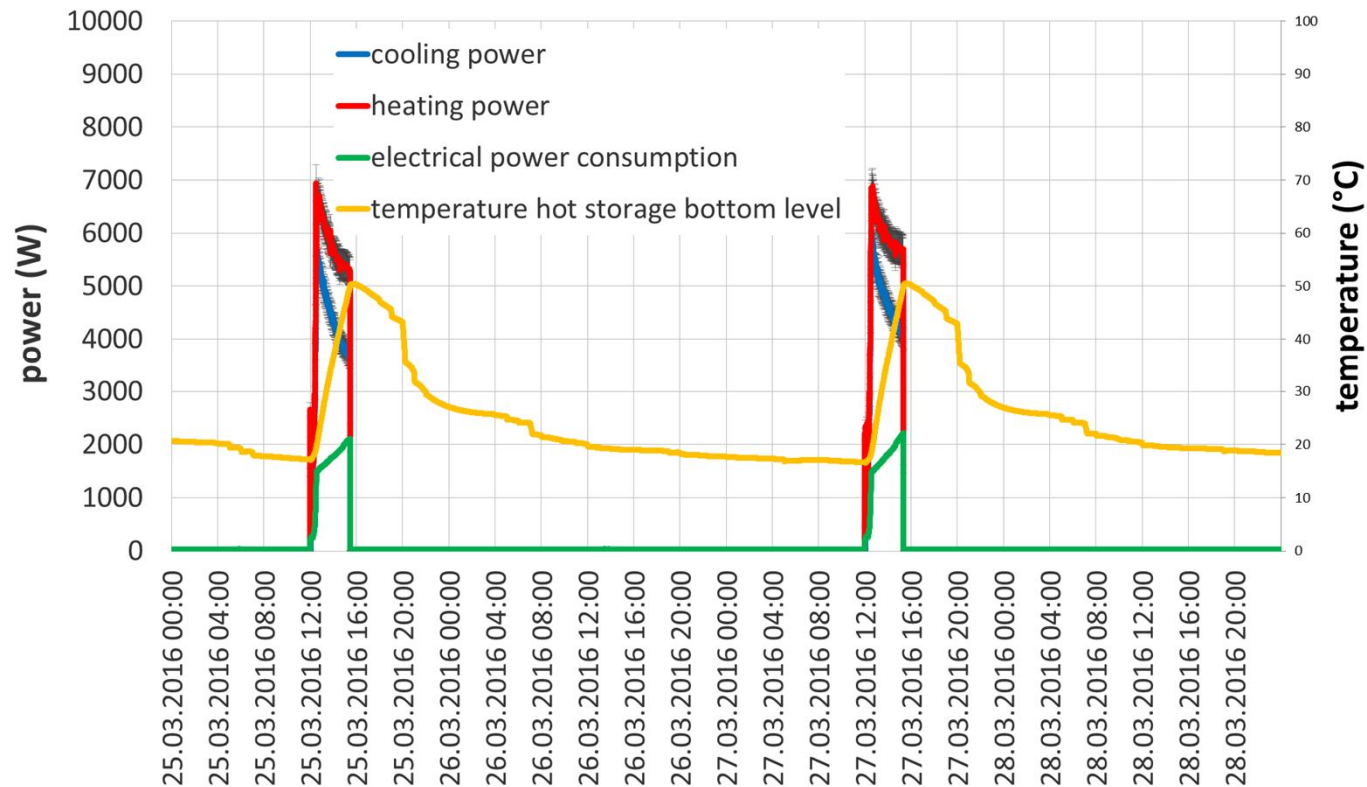
«domestic hot water preparation» measurement results

■ Produced PV Power and the electrical energy consumption of the system



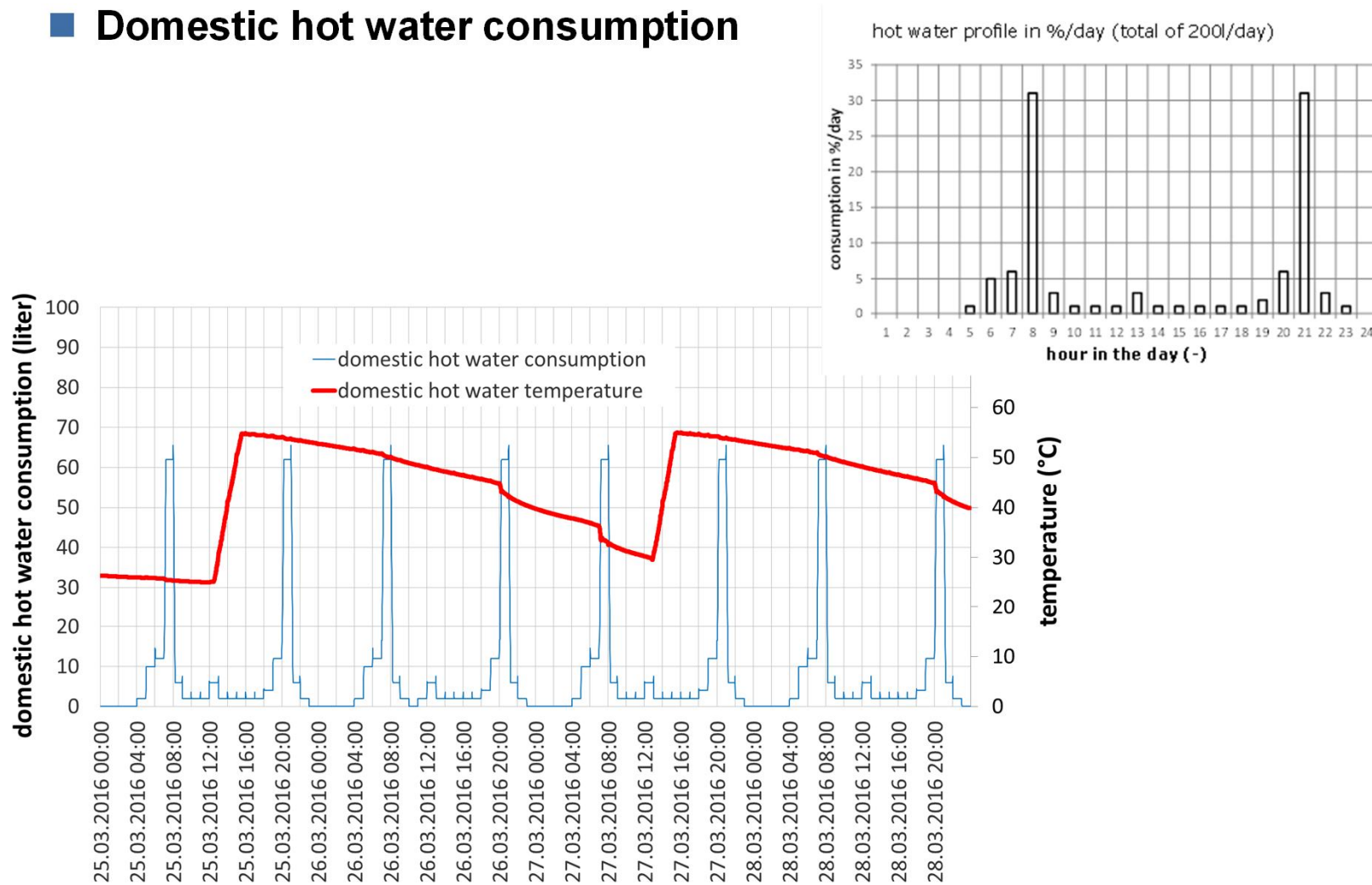
«domestic hot water preparation» measurement results

■ Heat pump power during the heating season (winter time)



«domestic hot water preparation» measurement results

■ Domestic hot water consumption



Conclusion and Outlook

■ Summary and Outlook

1. Further test and measurements
2. Development of additional control strategies
3. Simulation and validation of the system in Polysun
4. Find the relevant parameters for scaling up the system to higher power

■ Partners



Schweizerische Eidgenossenschaft
Confédération suisse
Confederazione Svizzera
Confederaziun svizra



vela solaris



MEYER BURGER

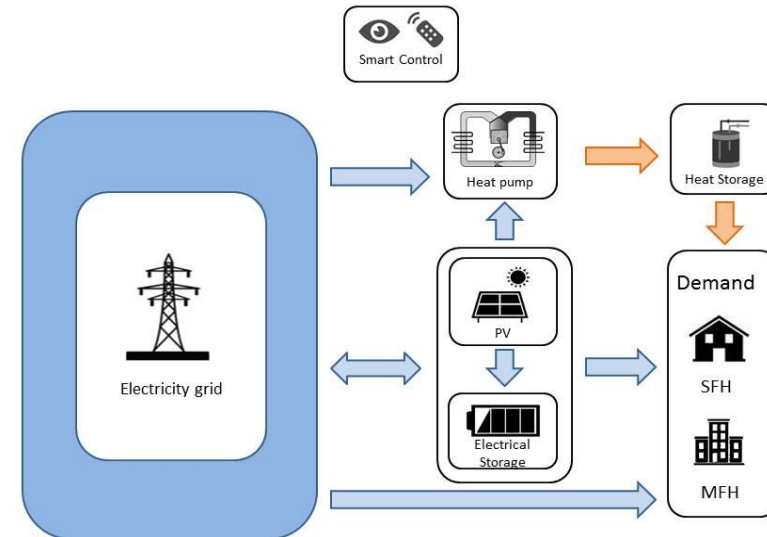
zehnder



CombiVolt I

■ Impulse

- increasing PV production
- first «smart heat pumps» on market, advertised to both optimize self-consumption of PV electricity and to deliver grid services to electricity utilities
- but: how is their performance?



■ Project aims

- analysis of the influence of intelligent control for heat pumps on PV-self-consumption and on grid-stability
- comparison of electrical and thermal storage
- consideration of different electricity tariff models (current and future scenarios)

CombiVolt II

■ Procedure

- whole system testing in the lab of 4 different systems
- simulation (e.g. extrapolation of measured system data, variation of climate data, load or tariff models, comparison realized vs. possible potential, electrical vs. thermal storage)

■ Project partners

- Energie Zukunft Schweiz (think-tank of 7 electricity utilities) + 3 more public electricity utilities
- 4 heat pump and system manufacturers

■ Contact

Evelyn Bamberger (evelyn.bamberger@spf.ch)

Institute for Solar Technology SPF

University of Applied Sciences Rapperswil

